



Boviwell®:
a national initiative
to help French farmers
to improve the welfare of cattle

Béatrice MOUNAIX, Service Bien-être et Santé,
Idele - French Livestock Institute.

Photo credits: Idele.

BOVIWELL TO EVALUATE THE WELFARE OF CATTLE



≈ 2500 audits

≈ 1200 audits

BoviWell : Outil de diagnostic du Bien-Être Animal en élevage bovin

Temps estimé : Entre 45 min et 1h30 pour 2 catégories animales

Etapes à suivre pour réaliser un diagnostic: Questions → Valider → Feuille de saisie → Valider → Résultats



2020-2021 : Boviwell Excel
2022: Boviwell Application



Process of improvement

Support for Quality schemes





36 INDICATORS OF WELFARE FOR BEEF CATTLE



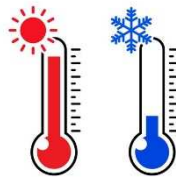
7 observations on animals: relation to human, body condition, behaviour, ...



15 measurements related to the housing conditions: resting, watering, exercise, ...



14 questions on farmer practices or herd results: disbudding, mortality, caesarean section...



OIE guidelines (2019)

Five Freedom (1965)



16 INDICATORS USED FOR THE SCORING



- Scoring based on WQ methods with adjustments
- Concertation with experts and stakeholders
- Decisions rules adapted to the objectives: to motivate any farmer in any farming system to improve
- Other indicators help to complete the evaluation, for counseling, improvement,...

Resting surface	
% of deviation to reference	Score
0%	100
5%	81
10%	67
20%	45
50%	14
80%	6
100%	0

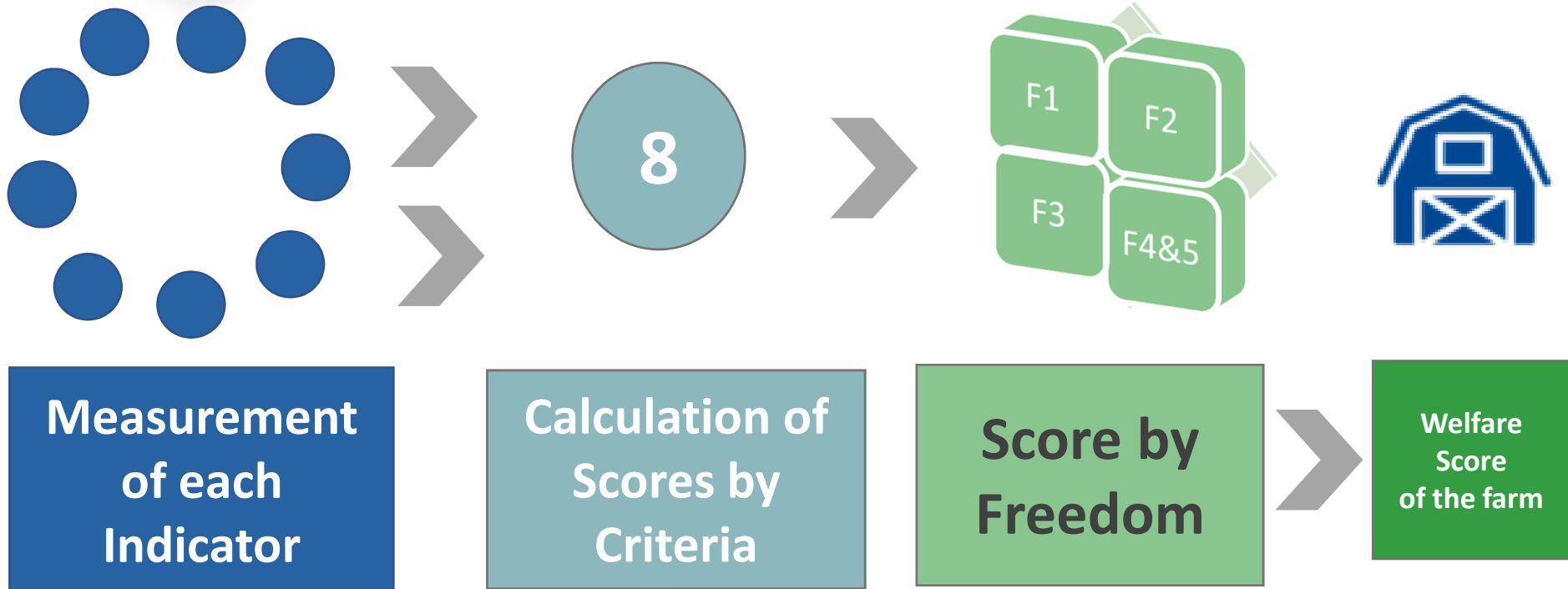
None	100
Thermic disbudding	2 – 75
Chemical disbudding	2 – 41
Dehorning > 2 months	2 – 27

Disbudding practice: None, Thermic, Chemical

Age: 2wks - 4wks - 2 months

Pain release: Full, Anaesthesia, NSAI, None

AGGREGATION BASED ON WELFARE QUALITY MODELS WITH ADJUSTEMENTS



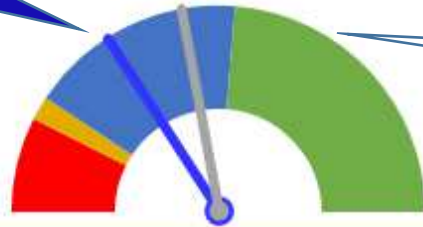
- Aggregation of scores based on Choquet models or weighing
- Combination of scores to avoid compensation between criteria
- Scores for each category of adult cattle in the herd and scores for the whole farm





RESULTS PRESENTED TO IDENTIFY AND TO ENCOURAGE IMPROVEMENT

The farm score



The mean score of ≈ 1000 other beef cattle farmers

The distribution of scores of ≈ 1000 other beef cattle farmers

FREEDOM 1	
Freedom from Hunger and Thirst	
Supérieur	
Feeding	Watering
Excellent	Supérieur



Liberté 1	
Ne pas souffrir de faim et soif	
Supérieur	
Alimentation	Abreuvement
Excellent	Supérieur

Liberté 2	
Ne pas souffrir d'inconfort	
Supérieur	
Confort	Facilité mvmt
Supérieur	Supérieur

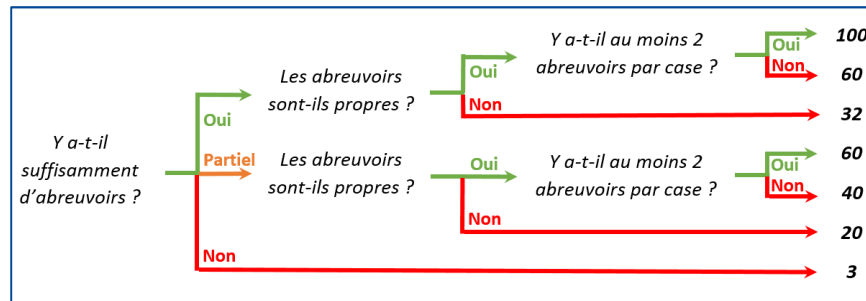
Liberté 3	
Ne pas souffrir de douleurs, blessures et maladies	
Excellent	
Santé	Pratiques
Excellent	Supérieur

Liberté 4 & 5	
Comportements appropriés	
Excellent	
Relation H-A	Aire exercic.
Excellent	Excellent



BOVIWELL IS TO BE USED BY TRAINED AUDITORS

- Boviwell is conducted by a farm technician or a vet
 - To rely on their skills regarding farming systems and/or animal condition
 - To immediately provide a reliable technical advice in relation with the scoring
- The farmer is present all along the audit and gets every explanation of the scoring by the end of the audit



	Nombre d'animaux / abreuvoir	Soit en cm / animal
Animaux de moins d'1 an	15	4,0
Animaux de 1 à 2 ans	13	4,6
Animaux de plus de 2 ans	10 / Partiel = 10 à 15	6 / Partiel = 4 à 6

- Auditors were trained to standardise observations and measurements and we organise monthly online meetings for auditors to answer questions and to reinforce training.
- Second level controls planned, not yet in process

More than 800 trained auditors



THANK YOU FOR ATTENTION

www.idele.fr

